

PRODUCT FEATURES



**Water Pan Design**

The extended length and open back make easier rip cutting of larger masonry materials.



**Tilt-Locking Cart Wheels**

Unique design that keeps conveyor in place with less shifting and smoother push/pull.



**Stay Level Blade Guard**

Full depth of cut.



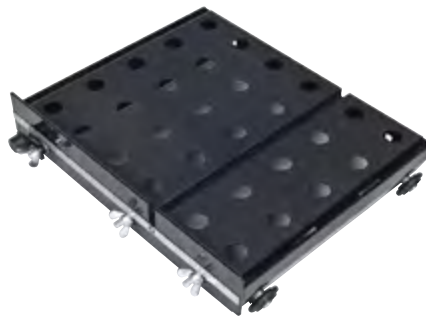
Combines the performance of a full size masonry saw with the convenience of portability. Also available in gas or electric versions, the BBC saws have a rugged jig-welded frame, durable enough for even the heaviest work load. Standard rear wheel dolly design and removable legs make transport and set-up easy.

TECHNICAL SPECIFICATIONS	BBC157	BBC207	BBC307	BBC547	BBC507
<b>Product Number</b>	701846 <b>82488</b> 0	701846 <b>82501</b> 6	701846 <b>30011</b> 7	701846 <b>82175</b> 9	701846 <b>30012</b> 4
Blade Guard Capacity – in. (mm)	14" (177)	14" (177)	20" (508)	14" (177)	20" (508)
Maximum Depth of Cut – in. (mm)	5" (127)	5" (127)	8" (203)	5" (127)	8" (203)
Arbor Size – in. (mm)	1" (25)	1" (25)	1" (25)	1" (25)	1" (25)
Blade Flange Diameter – in. (mm)	4" (107)	4" (107)	4" (107)	4" (107)	4" (107)
Blade Shaft RPM	2,900	2,900	2,400	2,900	2,400
Blade Shaft Bearings	1" Heavy Duty Flange				
Blade Shaft Drive	1 Belt				
Blade Guard Attachment	All Steel, Stay Level				
Conveyor Cart	All steel cart, tilt-lock cart wheels, anti-skid surface, measuring rule; 45°/90° cutting guide				
Frame	Heavy-duty, jig-welded steel frame. Open construction for larger materials. Adjustable foot pedal and head height control.				
Water Pump	Electric or Mechanically Belt Driven	Electric or Mechanically Belt Driven	Electric or Mechanically Belt Driven	Mechanically Belt Driven	Mechanically Belt Driven
Power Source	Electric	Electric	Electric	Gasoline	Gasoline
Motor/Engine Type	Baldor	Baldor	Baldor	Honda GX200	Honda GX200
Specifications	T.E.F.C., Thermal Protection	T.E.F.C., Thermal Protection	T.E.F.C., Thermal Protection	GX200K1QXC9	GX200K1QXC9
Net Horsepower*	1-1/2 HP	2 HP	3 HP	5.5 HP (4.1 kW)	5.5 HP (4.1 kW)
Voltage	115/230 volts	115/230 volts	208-230 volts	NA	NA
Cycle*/Current/Phase	60 Hz/AC/1	60 Hz/AC/1	60 Hz/AC/1	NA	NA
Full Load Amps	13.4/6.7 Amps	16.8/8.4 Amps	13 Amps	NA	NA
Starter	Capacitor	Capacitor	Capacitor	Recoil	Recoil
Engine Cooling	Air	Air	Air	Forced Air	Forced Air
Displacement – cu. In (l)	NA	NA	NA	11.96 cu. In (0.196 l)	11.96 cu. In (0.196 l)
Bore – in. (mm)	NA	NA	NA	2.7" (68)	2.7" (68)
Stroke – in. (mm)	NA	NA	NA	2.12" (54)	2.12" (54)
Cylinders/Stroke	NA	NA	NA	Single Cylinder 4 Cycle	Single Cylinder 4 Cycle
Fuel Capacity – gal. (l)	NA	NA	NA	.95 gal. (3.6 l)	.95 gal. (3.6 l)
Oil Capacity – qt. (l)	NA	NA	NA	.63 at. (.6 l)	.63 at. (.6 l)
Air Filter	NA	NA	NA	Four Stage Cyclone	Four Stage Cyclone
<b>Saw Dimensions</b>					
Saw Length – in. (mm)	60" (1,524)	60" (1,524)	60" (1,524)	60" (1,524)	60" (1,524)
Saw Width – in. (mm)	24" (609)	24" (609)	24" (609)	24" (609)	24" (609)
Saw Height – in. (mm)	34" (864)	34" (864)	34" (864)	38" (965)	38" (965)
Maximum Arbor Height Over Table – in. (mm)	24-1/2" (623)	24-1/2" (623)	24-1/2" (623)	24-1/2" (623)	24-1/2" (623)
Cart Length – in. (mm)	16" (404)	16" (404)	16" (404)	16" (404)	16" (404)
Cart Width – in. (mm)	19-3/8" (492)	19-3/8" (492)	19-3/8" (492)	19-3/8" (492)	19-3/8" (492)
Pan Length – in. (mm)	39-3/8" (1,000)	39-3/8" (1,000)	39-3/8" (1,000)	39-3/8" (1,000)	39-3/8" (1,000)
Pan Width – in. (mm)	18-1/8" (460)	18-1/8" (460)	18-1/8" (460)	18-1/8" (460)	18-1/8" (460)
Weight Crated – lbs (kg)	280 (127)	280 (127)	280 (127)	305 (138)	305 (138)
Weight Uncrated – lbs (kg)	250 (113)	250 (113)	250 (113)	275 (125)	275 (125)
<b>Accessories</b>					
Electric Water Pump – PE-1	708146 <b>68392</b> 3				
BBC Mechanical Water Pump	003100 <b>04237</b> 8				
BBC Water Pump Pulley	003100 <b>04669</b> 9				
Conveyor Cart Replacement	003100 <b>07367</b> 7				

\*= DATA PROVIDED BY ENGINE MANUFACTURER  
**GENUINE NORTON DIAMOND BLADE INCLUDED WITH SAW.**



Electric Water Pump



Conveyor Cart Replacement